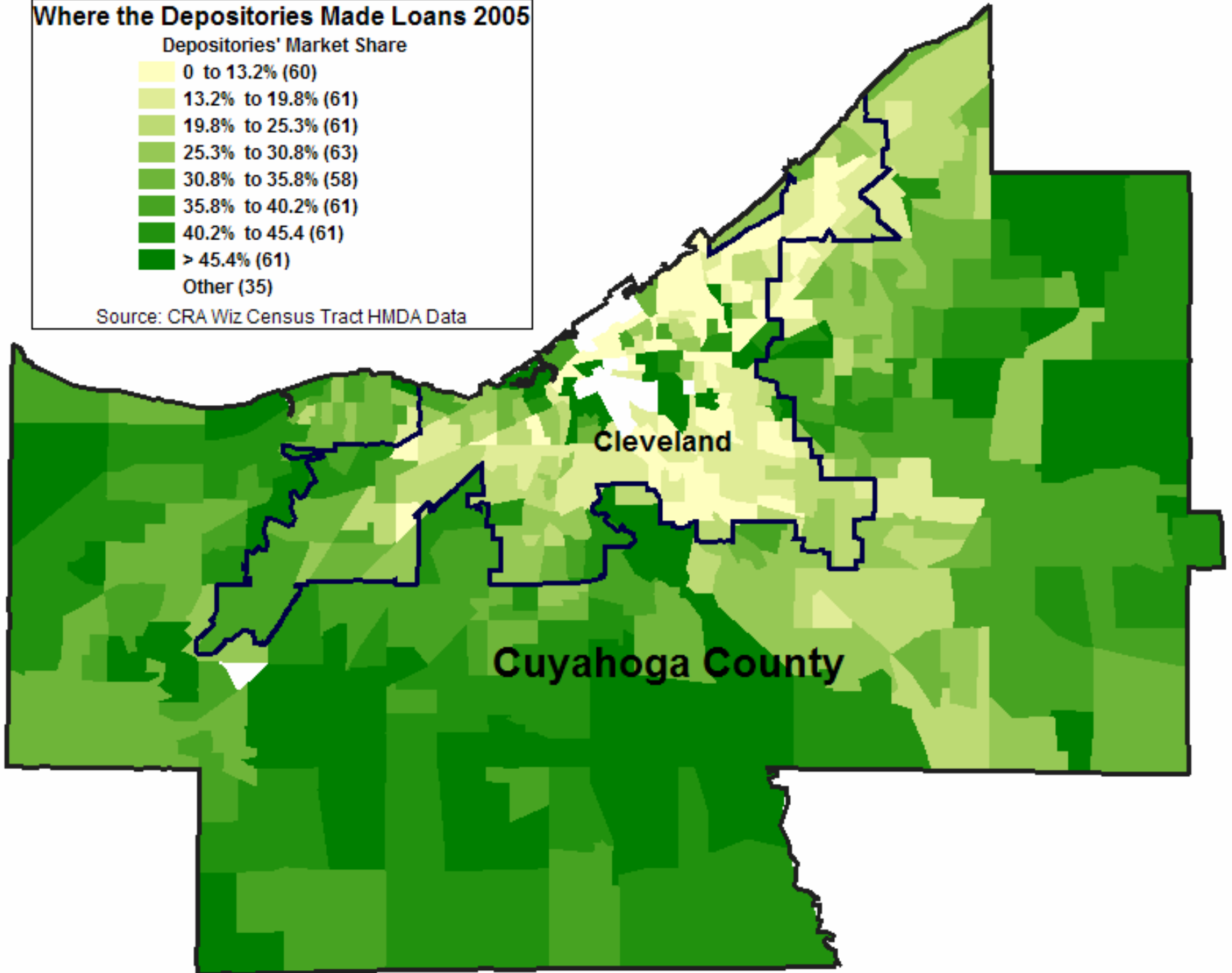


Where the Depositories Made Loans 2005

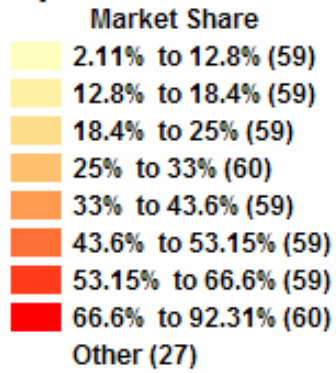
Depositories' Market Share

- 0 to 13.2% (60)
- 13.2% to 19.8% (61)
- 19.8% to 25.3% (61)
- 25.3% to 30.8% (63)
- 30.8% to 35.8% (58)
- 35.8% to 40.2% (61)
- 40.2% to 45.4% (61)
- > 45.4% (61)
- Other (35)

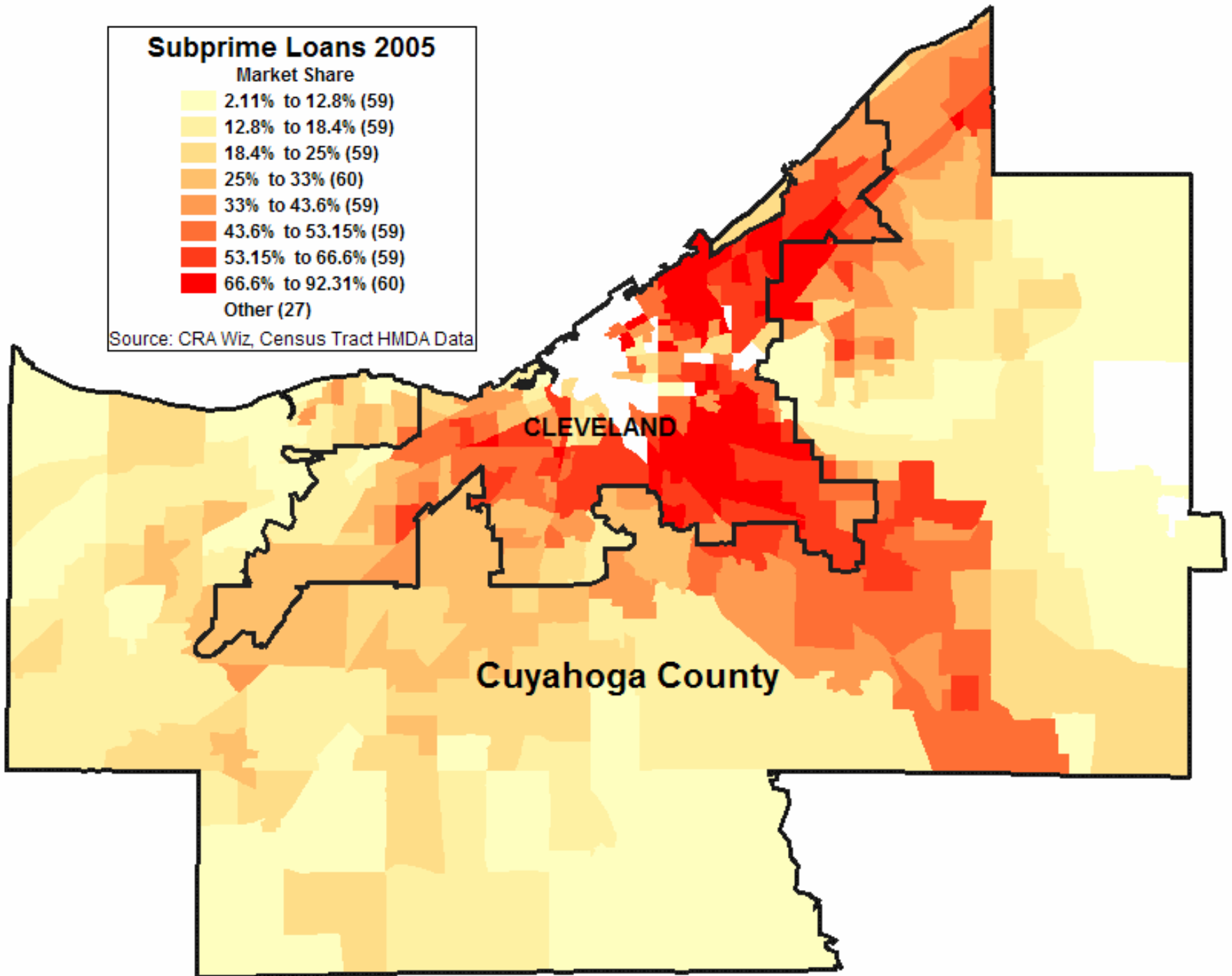
Source: CRA Wiz Census Tract HMDA Data



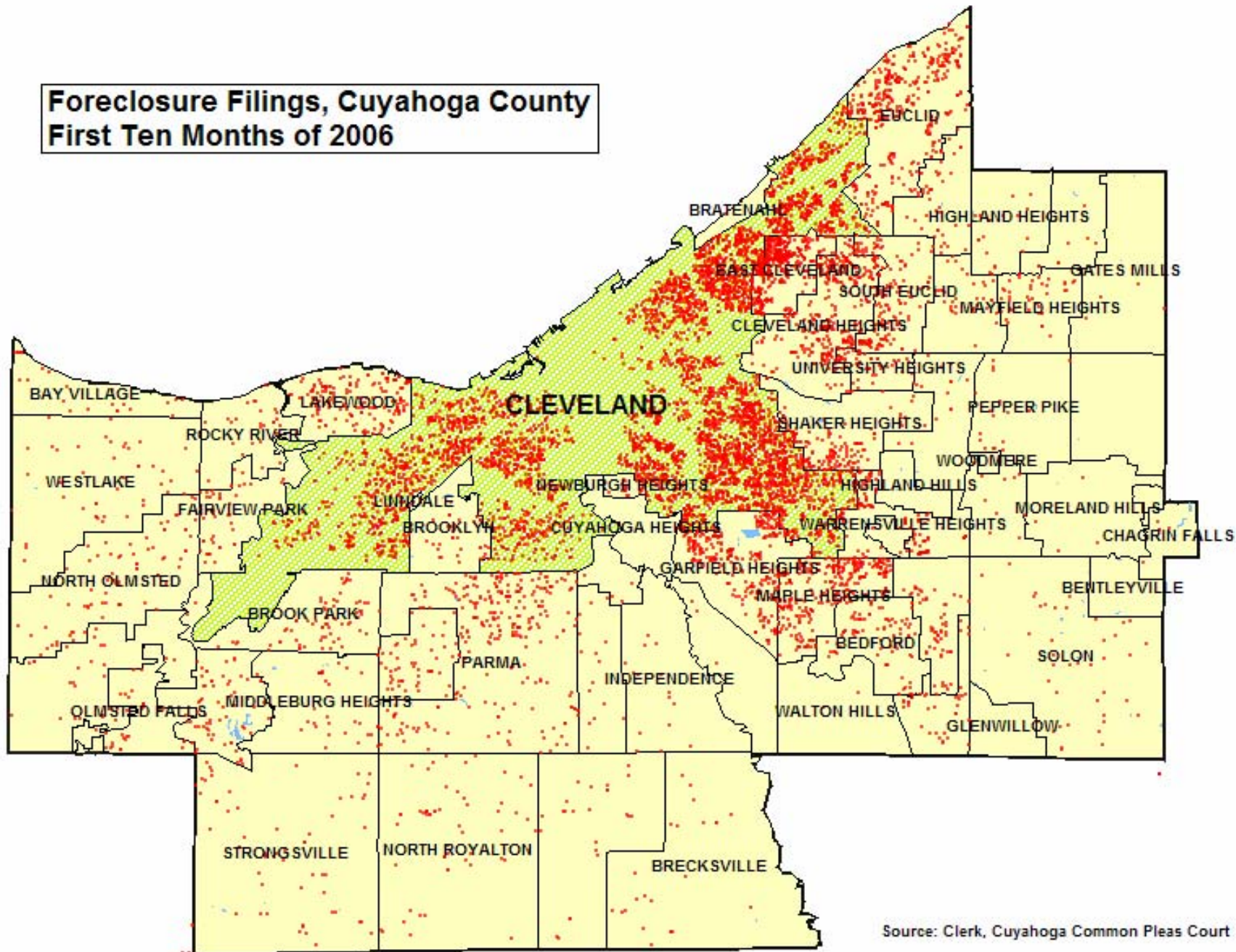
Subprime Loans 2005



Source: CRA Wiz, Census Tract HMDA Data



**Foreclosure Filings, Cuyahoga County
First Ten Months of 2006**



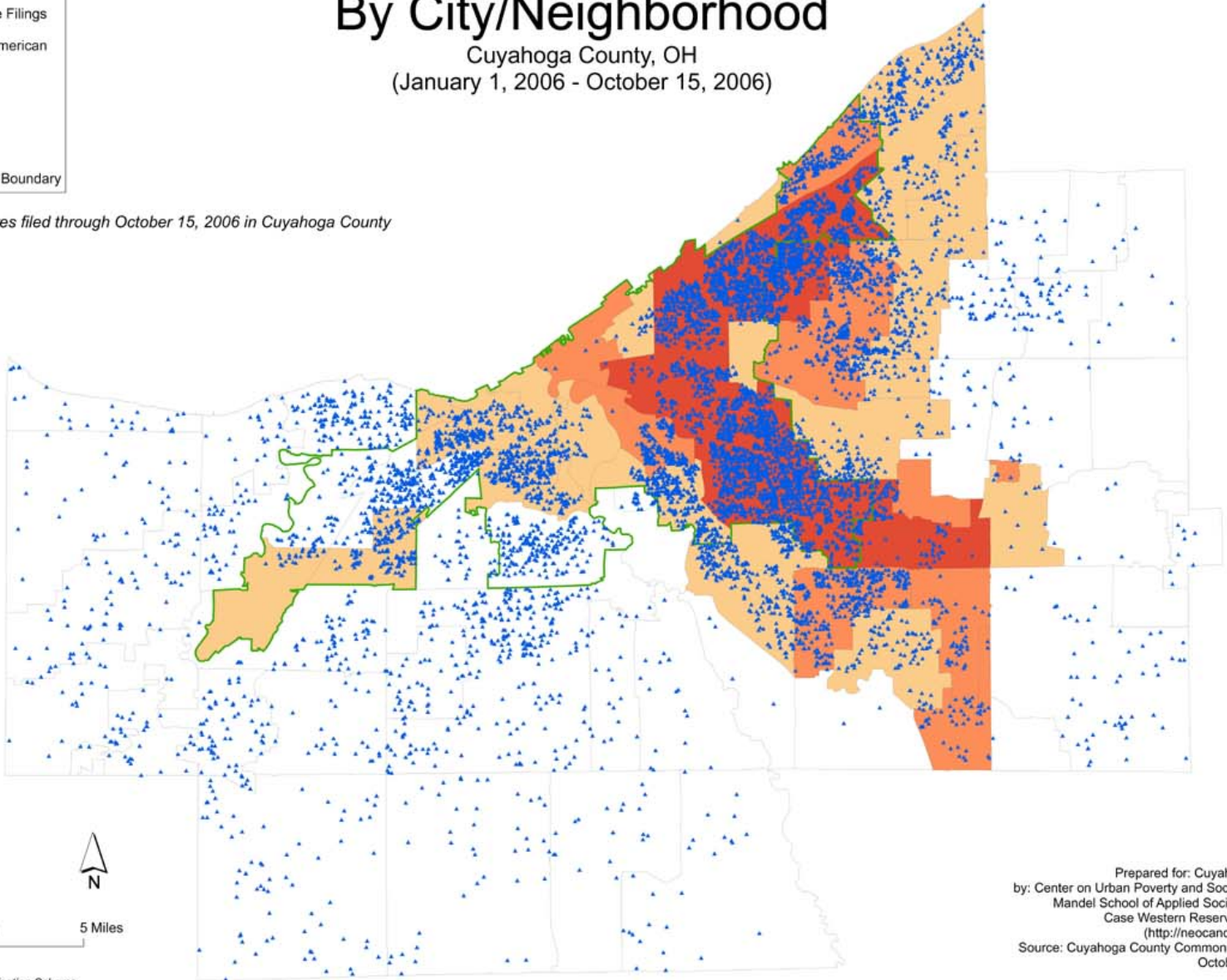
Source: Clerk, Cuyahoga Common Pleas Court

Foreclosure Filings By City/Neighborhood

Cuyahoga County, OH
(January 1, 2006 - October 15, 2006)



9,102 foreclosures filed through October 15, 2006 in Cuyahoga County



0 2.5 5 Miles

Natural Breaks Classification Scheme

Prepared for: Cuyahoga County
by: Center on Urban Poverty and Social Change,
Mandel School of Applied Social Sciences,
Case Western Reserve University
(<http://neocando.case.edu>)
Source: Cuyahoga County Common Pleas Court
October 17, 2006